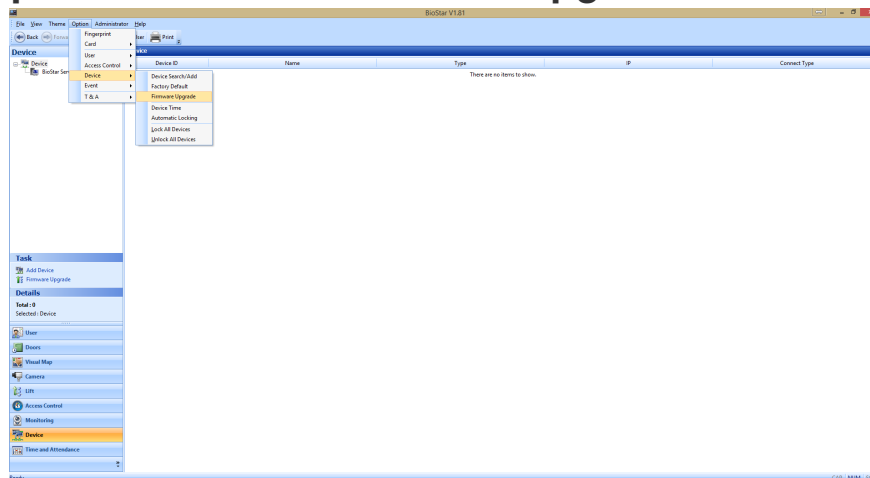


# Factory Default and Firmware Update

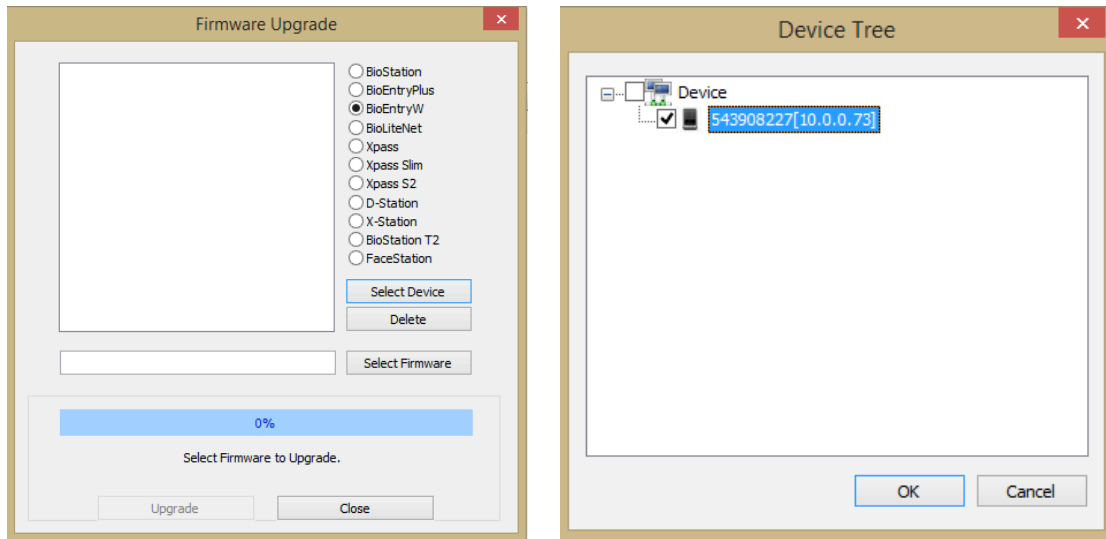
## Firmware Update

The latest firmwares are regularly updated and can be downloaded from <http://portal.entertechsystems.com>. It is recommended to use the latest firmware. You can perform the following steps after downloading the firmware.

- Go to **Option > Device > Firmware Upgrade** as shown below.



- **Select device** type which needs to be upgraded.



- Click **Select firmware** and choose the firmware file
- Click **Upgrade**
- The reader will reboot once the firmware upgrade is completed.

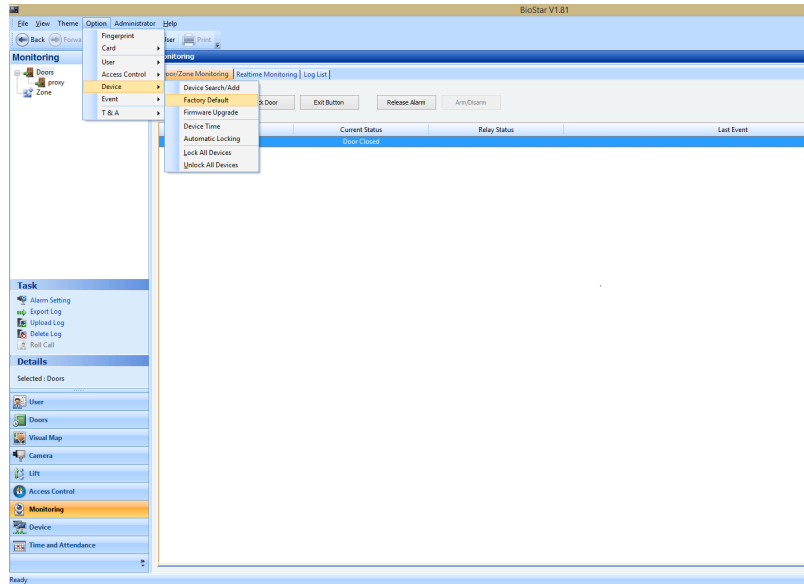
## Factory Default

Factory Default will push the reader in DHCP state and lose its current IP. Internal memory of the Reader will also be defaulted. Perform the following steps to achieve the process.

- Go to **Option > Device > Factory Default** as shown below.



# GET STARTED SD1026



- **Select device** to be Defaulted
- Click **Initialize**
- Reader will reboot once the process is completed.

