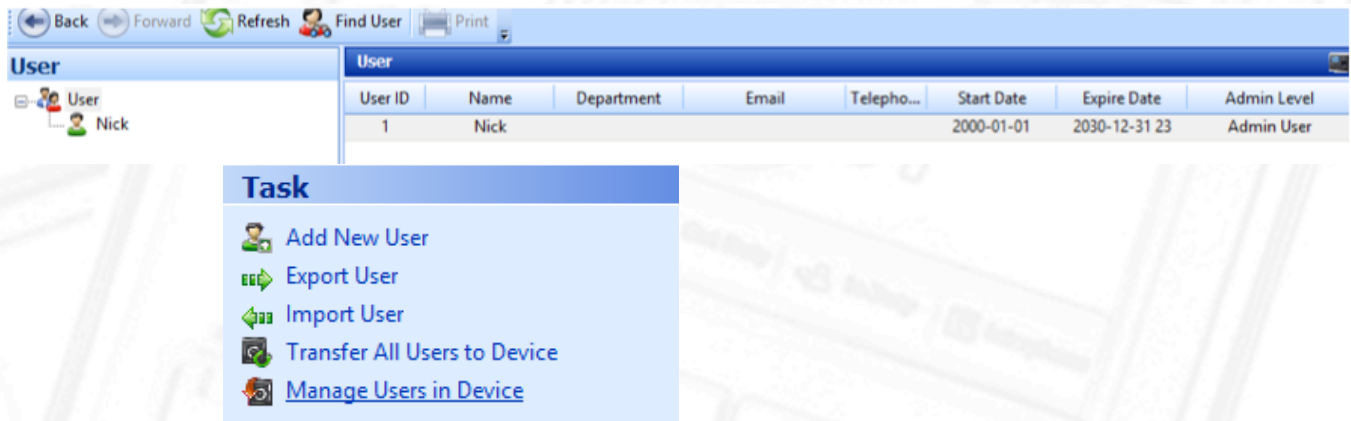


# Pulling Users into BioStar from your device

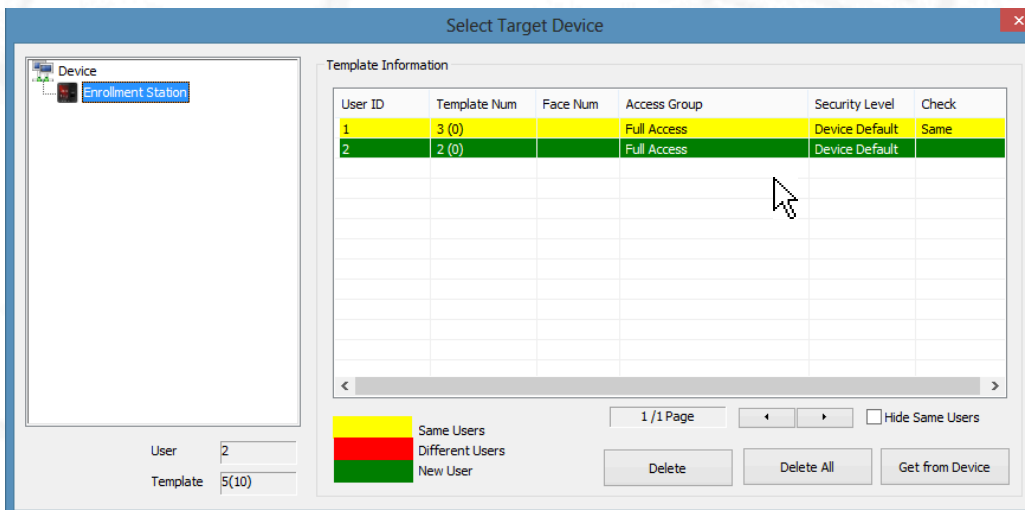
If you are enrolling new users directly on your Suprema device, it is important to note how to pull them into BioStar without erasing other user information. If a user ID already exists in the BioStar software, pulling them from your device will overwrite this user and vice versa when pushing users from BioStar to your Suprema device.

## Pulling Users into BioStar

Once you have a new user enrolled in your Suprema Reader, open BioStar and select the "Manage Users in Device" under the *User* tab.



Click on your device from the left side device list. Select all users that are highlighted green. Green represents users that are enrolled in the device but not yet added into Bio-Star.



Select any new users (highlighted in blue) and choose "Get from Device".

The screenshot shows a window titled "Select Target Device" with a "Device" pane on the left containing "Enrollment Station". The main area is "Template Information" with a table:

User ID	Template Num	Face Num	Access Group	Security Level	Check
1	3 (0)		Full Access	Device Default	Same
2	2 (0)		Full Access	Device Default	

Below the table are controls: "User" (2), "Template" (5(10)), a legend (Yellow: Same Users, Red: Different Users, Green: New User), "1 / 1 Page", "Hide Same Users" checkbox, and "Delete", "Delete All", "Get from Device" buttons.

This will add the new user into BioStar.

The screenshot shows the "Juser" application interface. On the left is a tree view with "User" expanded, showing "Nick" and "Test". The main area is a table:

User ID	Name	Department	Email	Telepho...	Start Date	Expire Date	Admin Level
1	Nick				2000-01-01	2030-12-31 23	Admin User
2	Test				1970-01-01	2030-12-31 00	Normal User