

How to Setup the BioMini

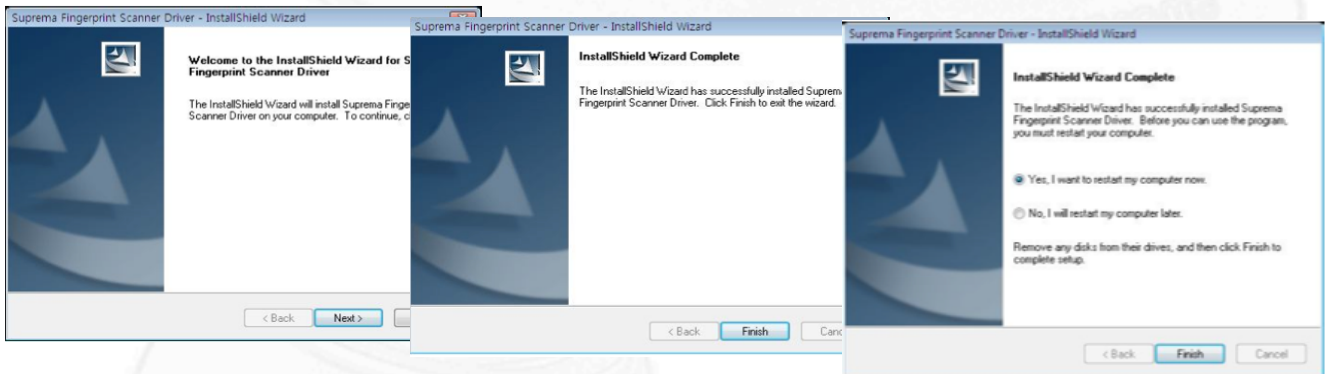
System Requirements

OS	Microsoft WINDOWS 98SE / ME / 2000 / XP(32,64 BIT) / VISTA(32,64 BIT) / 7 (32,64 BIT) / 8(32,64 BIT)
CPU	Pentium 133 MHz
Memory	16 Mbyte
Interface	USB Port
HDD	20 MB

Install Driver Program

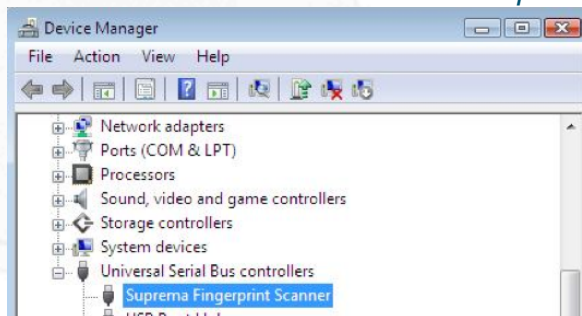
Remove the BioMini from your PC before installing the driver.

Run the program to install the driver and follow the screen prompts by selecting **Next** → **Finish** → **Yes** → **Finish**.



Confirm Installation

Now that driver has been installed, plug the BioMini into your PC's USB port. Open your Device Manager through the Control Panel and Locate the **Suprema Fingerprint Scanner**.



Find in BioStar



Once you have verified that the driver has been installed by finding the scanner in the Device Manager you can now open up BioStar.

Select the *User* tab in the left pane and click on the *Fingerprints* tab.

Click *Enroll Device* and you will see “USB Scanner” appear in the Enroll Device drop down menu → hit *Apply* and begin enrolling users with your BioMini.

The screenshot shows the 'User' management window in BioStar. The 'Basic Information' section includes fields for Name (Randolph), Department, Telephone, Password (masked with dots), E-Mail, and Admin Level (Admin User). A 'No Image' placeholder is visible for the user's profile picture. The 'Details' tab is active, and the 'Fingerprints' sub-tab is selected. In the 'Enroll Device' section, a dropdown menu is open, showing 'USB scanner' selected and highlighted with a red box. Below this, there are two finger enrollment areas: '1st Finger' and '2nd Finger'. Each area has a 'Duess' checkbox, a 'Scan' button, and a 'Delete' button. At the bottom of the window, there are 'Add', 'Delete', and 'Apply' buttons.